



Let your left hand know what your right hand is doing

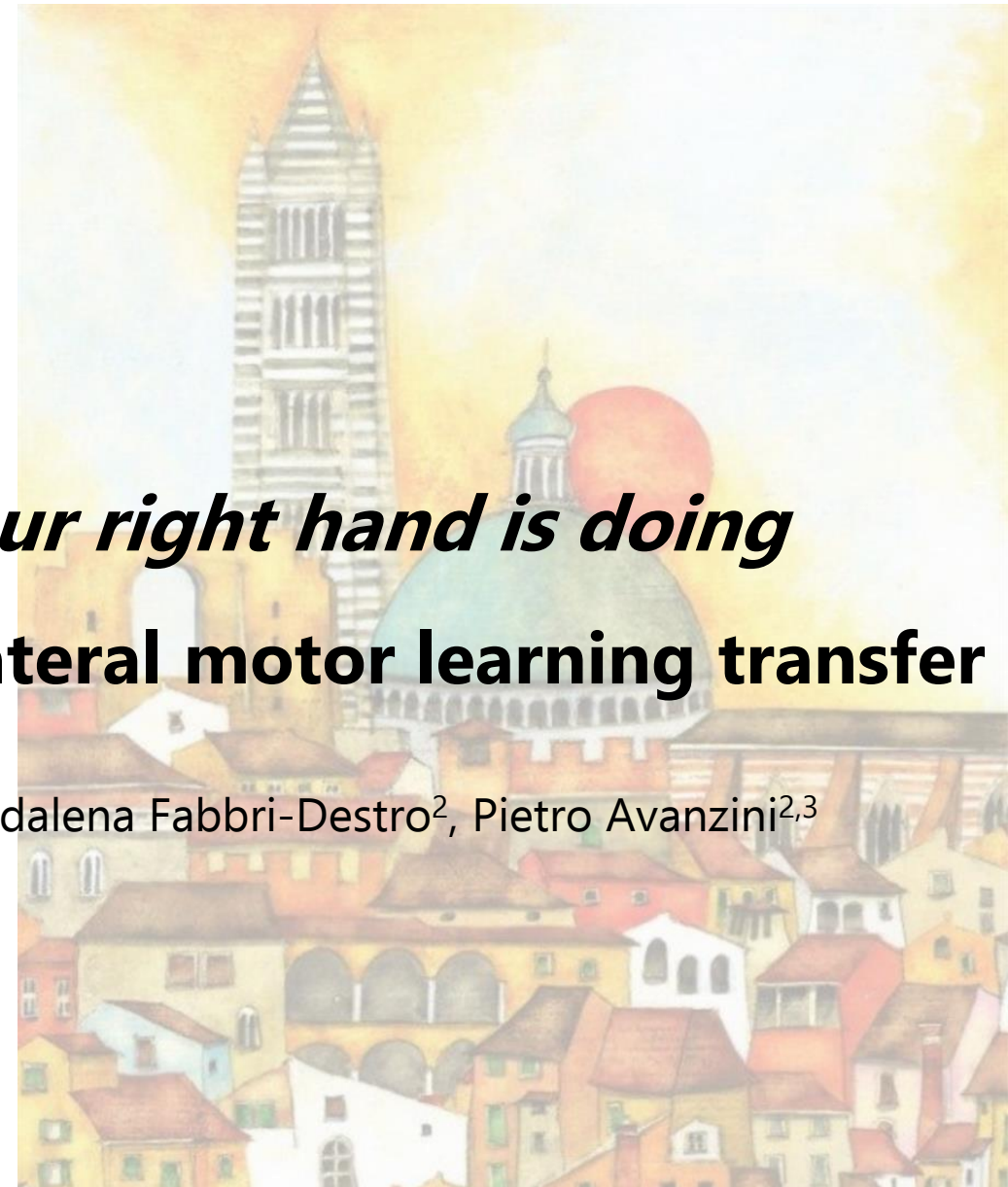
Trans-callosal inhibition explains contralateral motor learning transfer

Arturo Nuara¹, Antonella Mancuso¹, Maria Chiara Bazzini², Maddalena Fabbri-Destro², Pietro Avanzini^{2,3}

(1) Department of Surgery and Medicine, University of Parma, Italy;

(2) CNR Neuroscience Institute, Parma, Italy;

(3) Humanitas Clinical and Research Center, Milan, Italy.

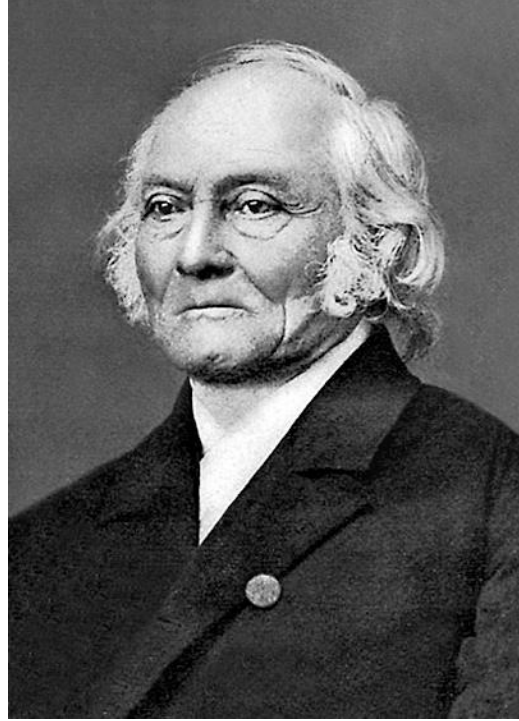


XXXI CONGRESSO NAZIONALE SIFP

Siena 9-11 novembre 2023

Museo Santa Maria della Scala

Background



G. Th. Fechner. Leipzig, 1858

E. H. Weber hatte schon früher nach einigen, bei den Schreibübungen seiner Kinder gemachten, Erfahrungen mündlich gegen mich bemerkt, dass die Uebung des Schreibens mit der rechten Hand sich in gewisser Weise auf die linke zu übertragen vermöge, aber in Rücksicht auf die symmetrische Anord-

«[...] the practice of writing with the right hand could be transferred in a certain way to the left»

Journal of Experimental Psychology, 1928

TRANSFER OF LEARNING

BY CHARLES W. BRAY

*Princeton University*¹

It has long been known that practice of one part of the body in performing a skilled act increases the ability of the bilaterally symmetrical part in the same act. The effects of practice are transferred from one hand or one arm to the other, and from one toe to the similar toe of the other foot. This phenomenon has been called cross-education.² There are also indications that a similar transfer takes place to all parts of the body, not merely to bilaterally symmetrical parts.

erlangt hat. Eines Tages, nachdem ich den Satz von 100 Versuchen vollendet hatte, ergriff ich zu guter Letzt die Feder mit der nun frei gewordenen rechten Hand, um die letzte 9 mit dieser aufzuschreiben, und war höchlich überrascht, als sie dastand, zu sehen, dass ich sie verkehrt, als 9 geschrieben hatte, so wie es uns sonst geläufiger ist, mit der Linken zu schreiben. Diese hatte also ihre richtige Uebung nun in verkehrtem Sinne auf die rechte Hand übertragen.

«[...]the left hand had now transferred her attitude to the right hand, in the wrong sense».

Background

Neurophysiological Mechanisms Involved in Transfer of Procedural Knowledge

The Journal of Neuroscience, January 31, 2007 • 27(5):1045–1053

Monica A. Perez,¹ Steven P. Wise,² Daniel T. Willingham,³ and Leonardo G. Cohen¹

Relationship between the interlimb transfer of a visuomotor learning task and interhemispheric inhibition in healthy humans

Cerebral Cortex, 2023, 33, 7335–7346

Giulia Paparella ¹, Martina De Raggi², Antonio Cannavacciuolo ¹, Donato Colella ², Davide Costa², Daniele Birreci², Massimiliano Passaretti ², Luca Angelini ², Andrea Guerra ^{1,2}, Alfredo Berardelli ^{1,2}, Matteo Bologna ^{1,2,*}

Gregor Thut · Ulrike Halsband · Marianne Regard
Eugène Mayer · Klaus L. Leenders · Theodor Landis

Exp Brain Res (1997) 113:365–370

What is the role of the corpus callosum in intermanual transfer of motor skills? A study of three cases with callosal pathology

Contralateral effects of unilateral strength training: evidence and possible mechanisms
J Appl Physiol 101: 1514–1522, 2006;
Timothy J. Carroll,¹ Robert D. Herbert,² Joanne Munn,² Michael Lee,¹ and Simon C. Gandevia³

Interhemispheric transfer of visuomotor conditional learning via the anterior corpus callosum of monkeys
M.J. Eacott and David Gaffan *Behavioural Brain Research*, 38 (1990)

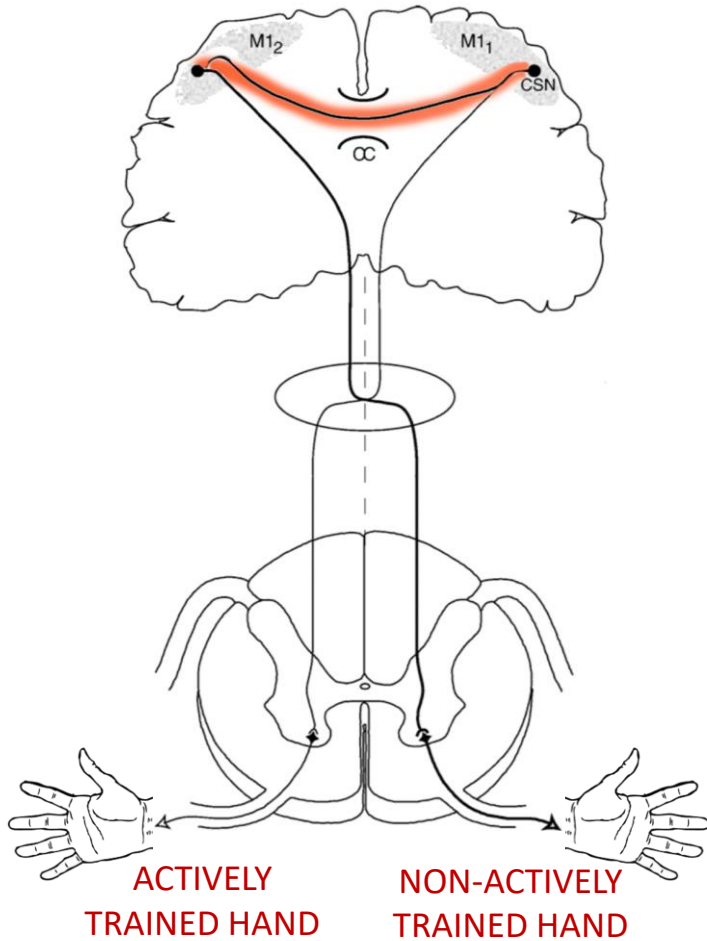
Unilateral practice of a ballistic movement causes bilateral increase in performance and corticospinal excitability
J Appl Physiol 104: 1656–1664, 2008
Timothy J. Carroll,^{1,2} Michael Lee,¹ Marlene Hsu,¹ and Janel Sayde¹

Transfer of Motor Learning Is More Pronounced in Proximal Compared to Distal Effectors in Upper Extremities

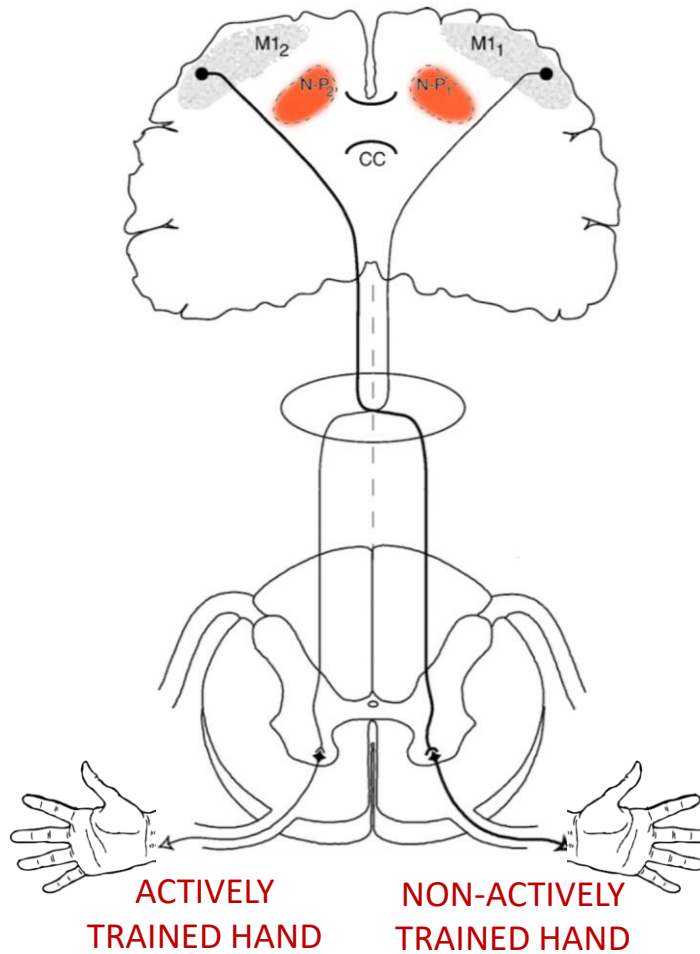
Tore K. Aune^{1*}, Morten A. Aune¹, Rolf P. Ingvaldsen¹ and Beatrix Vereijken²

Neuroanatomical models explaining CLT

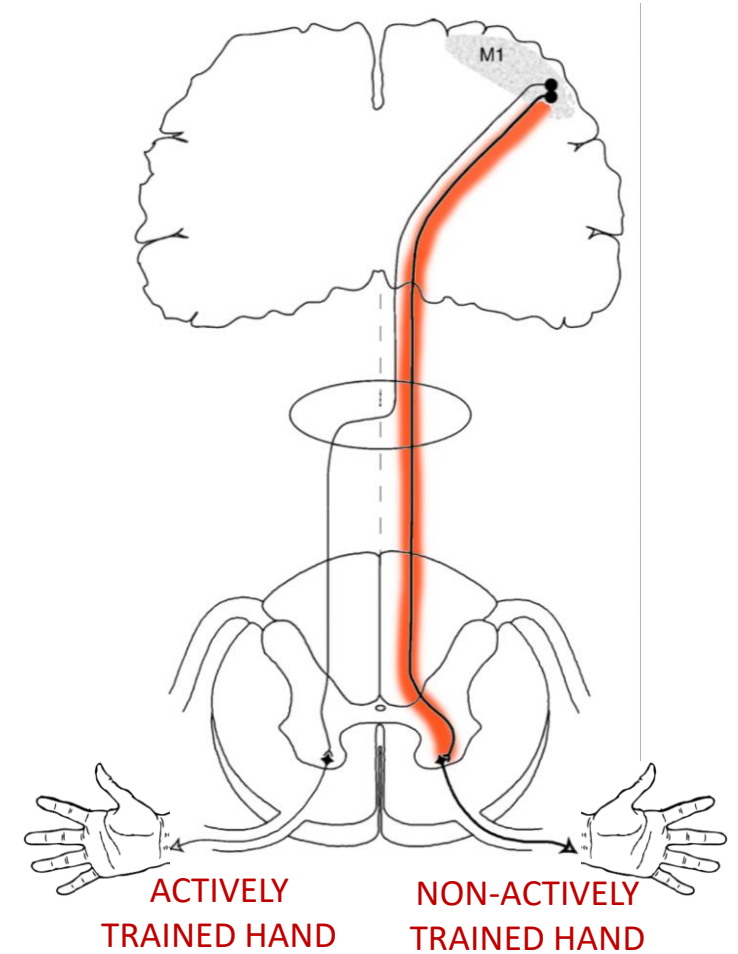
Callosal «spill over» model



Bihemispheric model



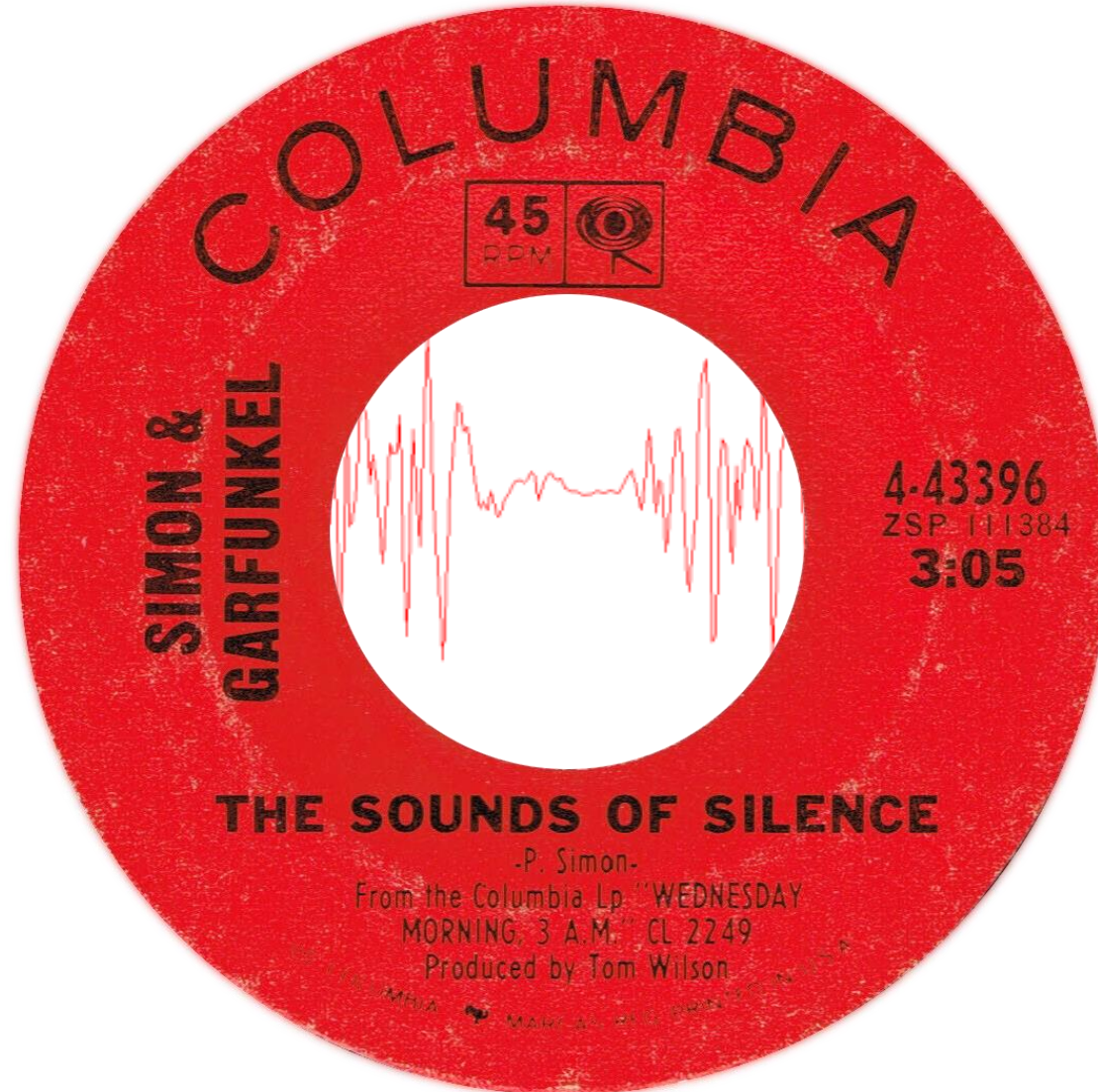
Ipsilateral CST model



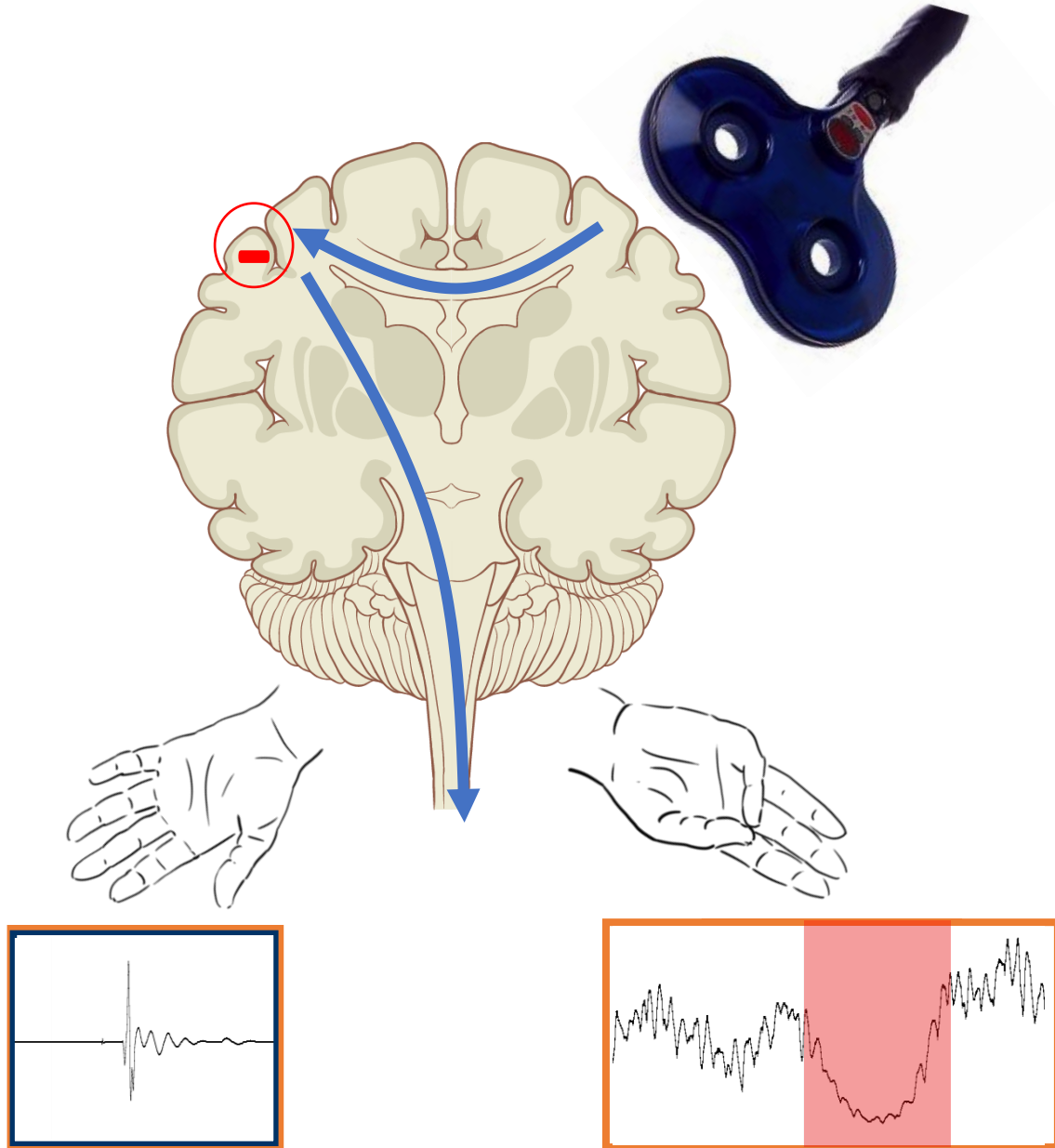
CONTRALATERAL LEARNING TRANSFER



TRANSCALLOSAL CONNECTIVITY

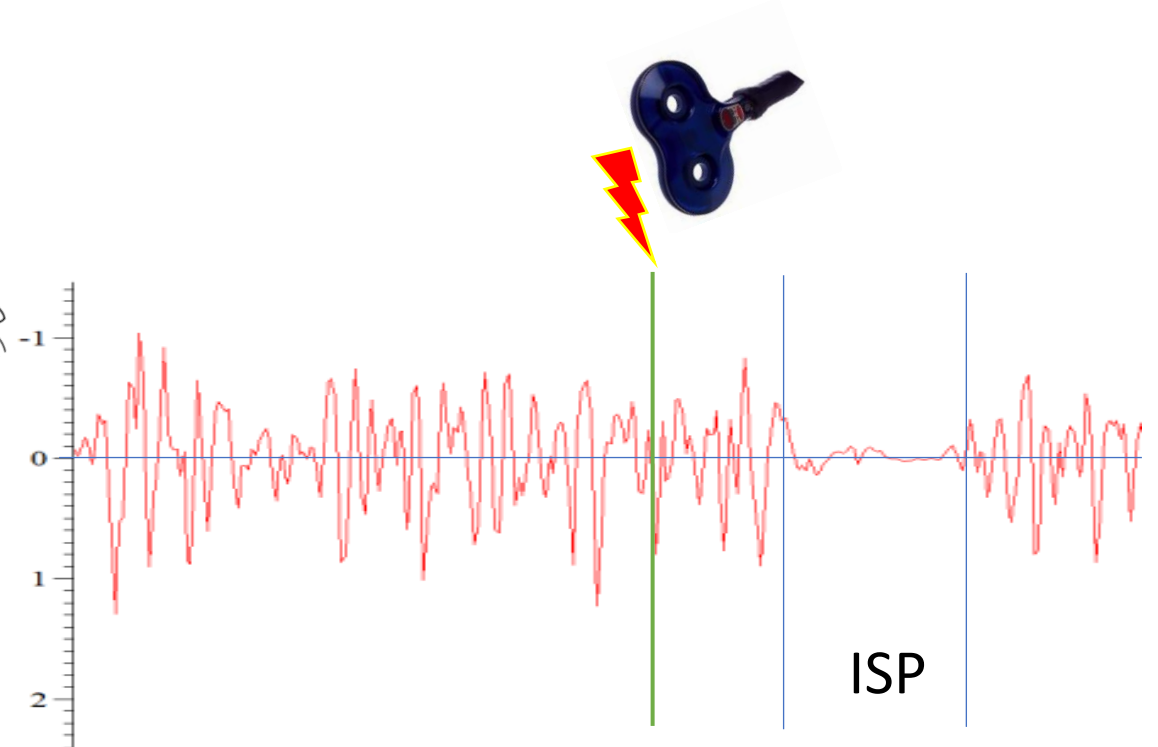
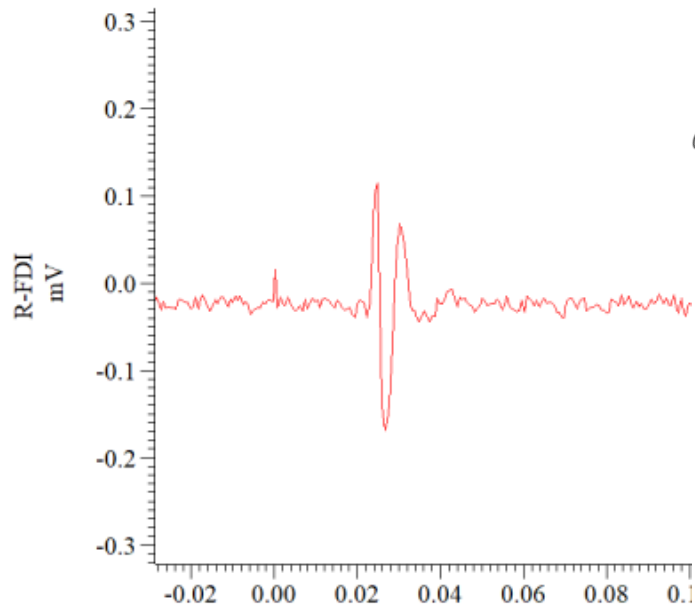
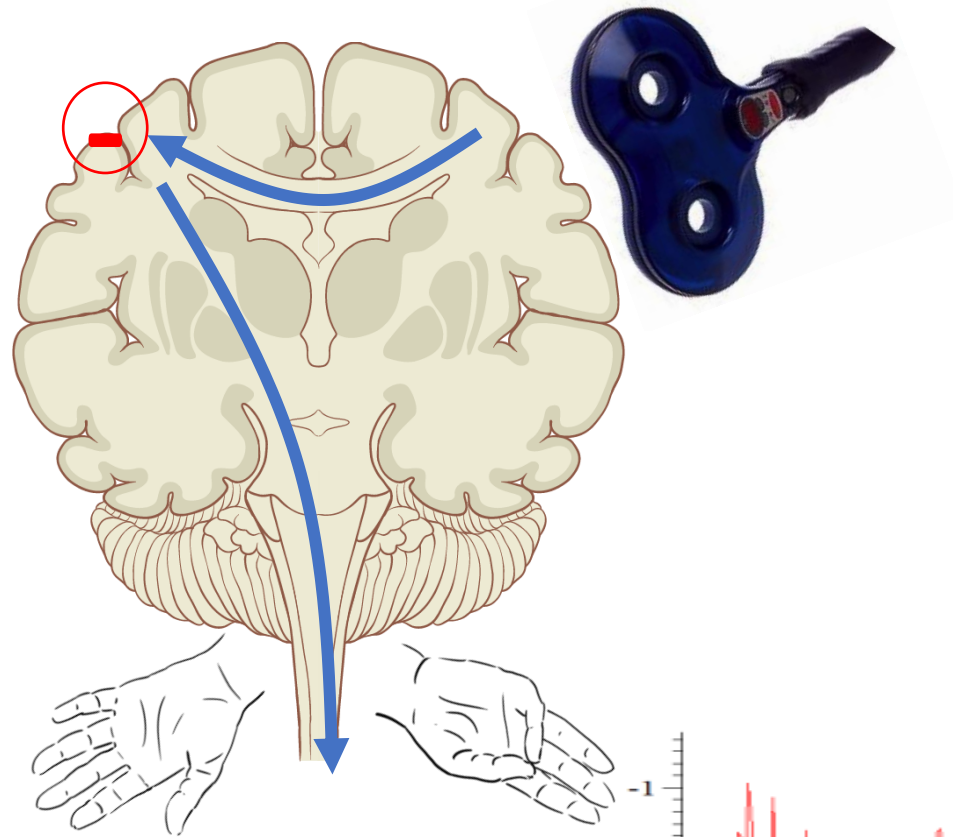


Ipsilateral Silent Period (ISP)

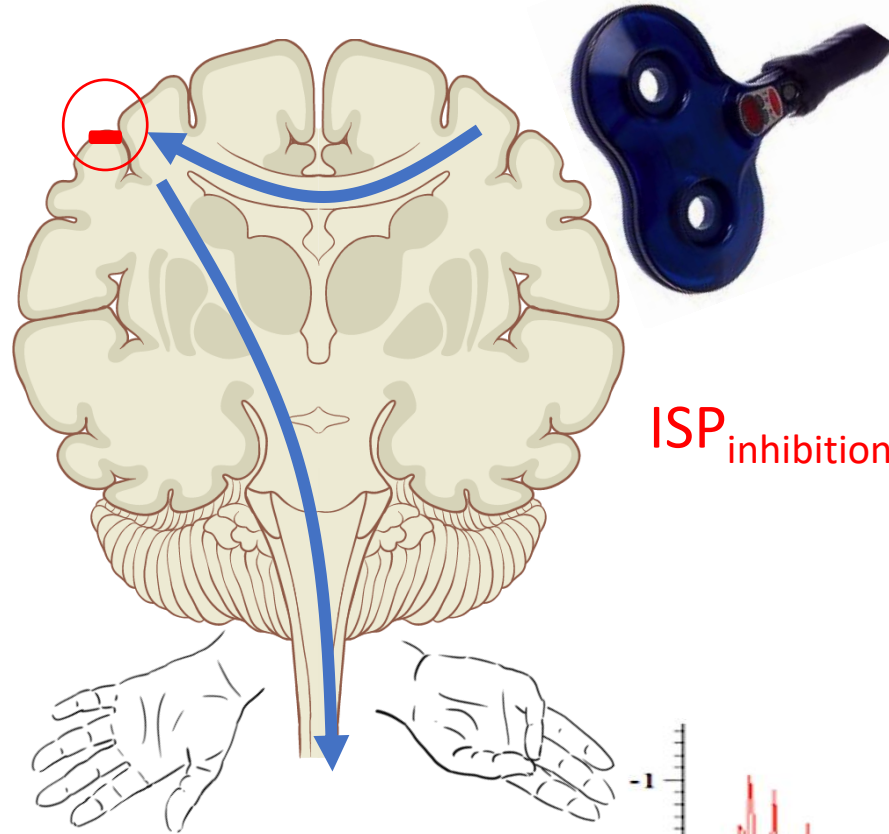


- Suppression of voluntary tonic EMG activity by TMS of the ipsilateral hemisphere
- Cortical origin (*Wassermann et al. 1991*)
- Driven by excitatory (glutamatergic) transcallosal motor fibers synapsing on inhibitory (GABAergic) interneurons in the contralateral primary motor cortex (*Ferbert et al., 1992; Meyer et al., 1995*)

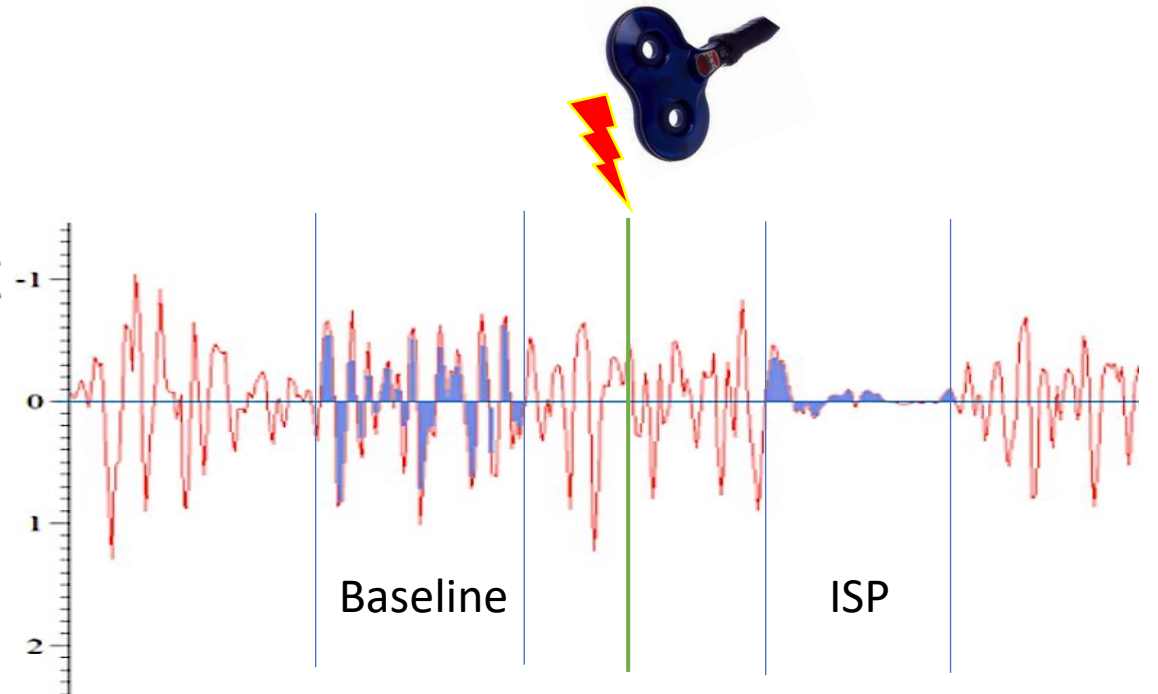
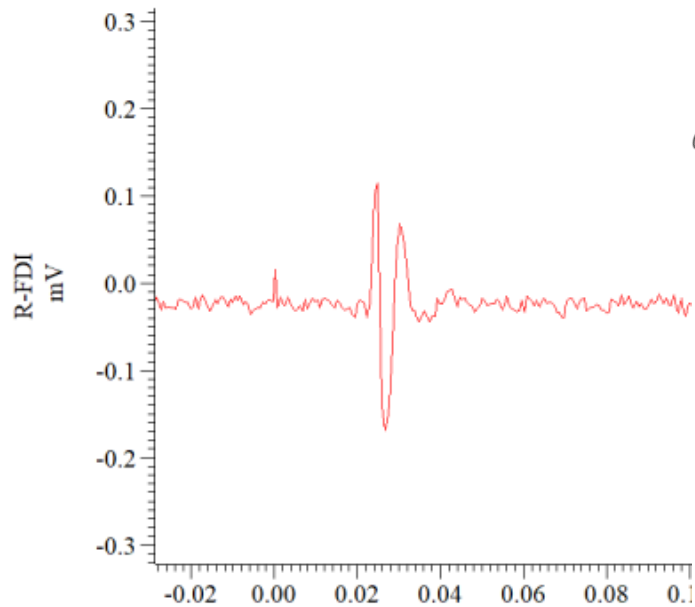
Ipsilateral Silent Period (ISP)



Ipsilateral Silent Period (ISP)



$$ISP_{inhibition}\% = (1 - ISP_{AREA}/Baseline_{AREA}) \times 100$$

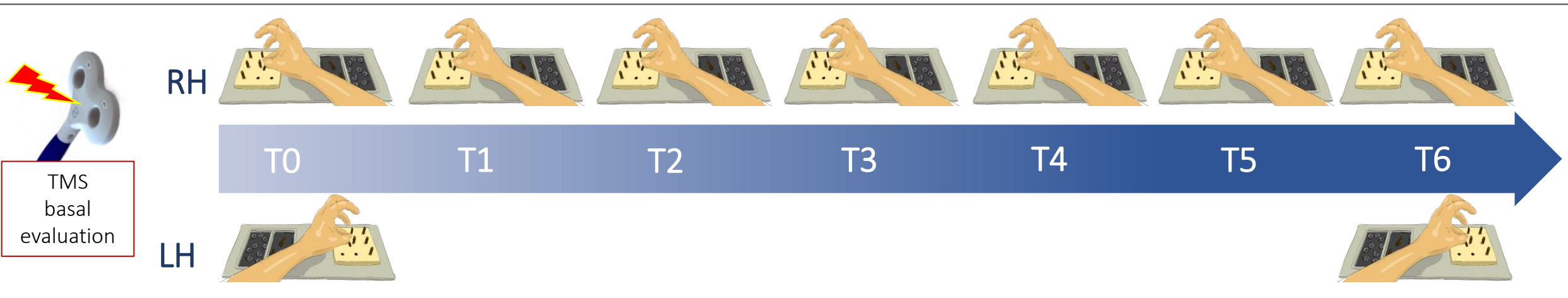
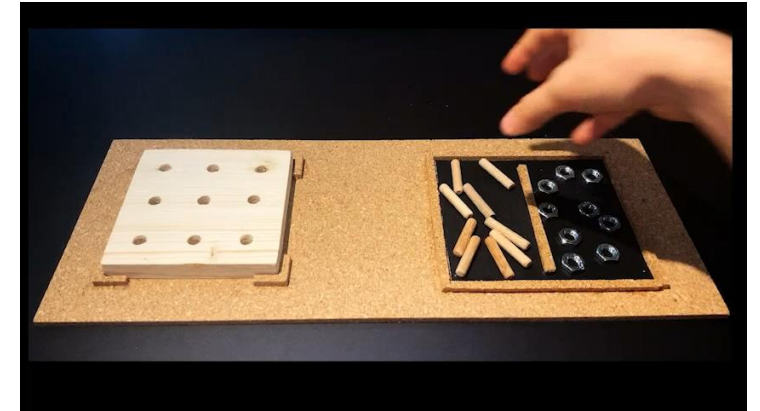


Experimental design

POPULATION: 22 healthy subjects (age 32 ± 8 y.o.; 16 F)

MOTOR TASK: Modified Nine-Hole Peg Test (mNHPT) (Nuara et al, 2019)

- Performance depends on frontoparietal network functioning (Uggetti et al. 2016; Fiori et al. 2018)
- Performance improves with repetition over time (Solari et al. 2005)



NEUROPHYSIOLOGICAL REGRESSOR

Ipsilateral Silent Period

$$\text{ISP}\% = (1 - \text{ISP}_{\text{AREA}} / \text{Baseline}_{\text{AREA}}) \times 100$$



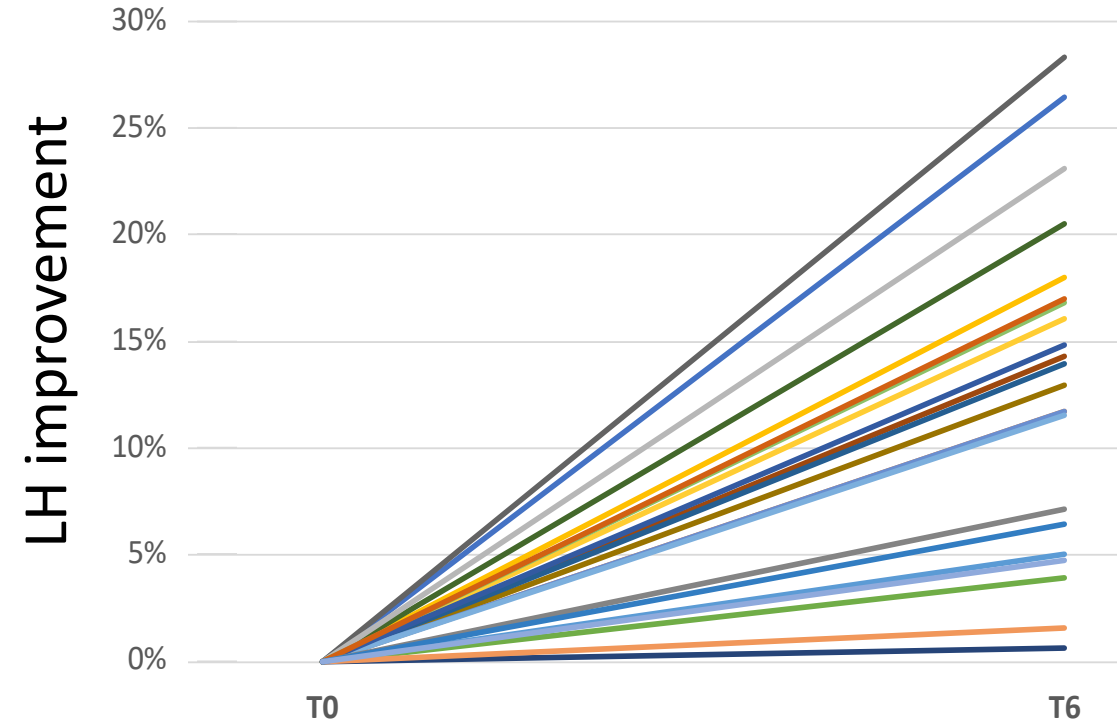
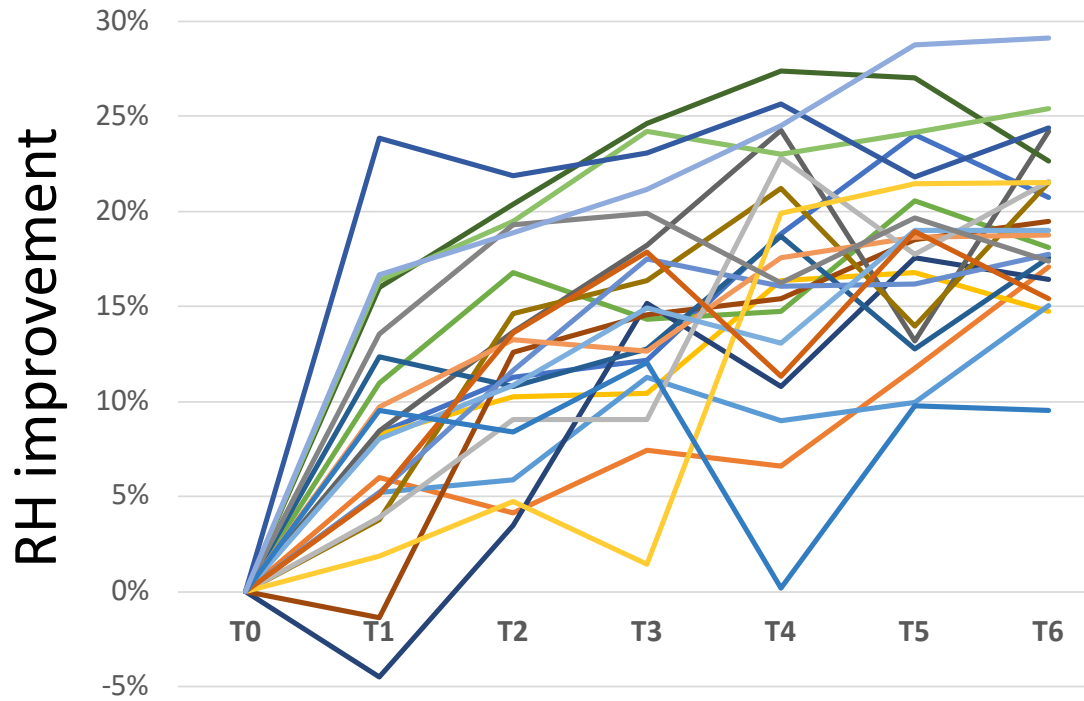
MAIN BEHAVIOURAL OUTCOME

Contralateral Learning Transfer

$$\text{CLT} = (\Delta_{\text{T0-T6 LH}} - \Delta_{\text{T0-T6 RH}}) / \Delta_{\text{T0-T6 RH}}$$

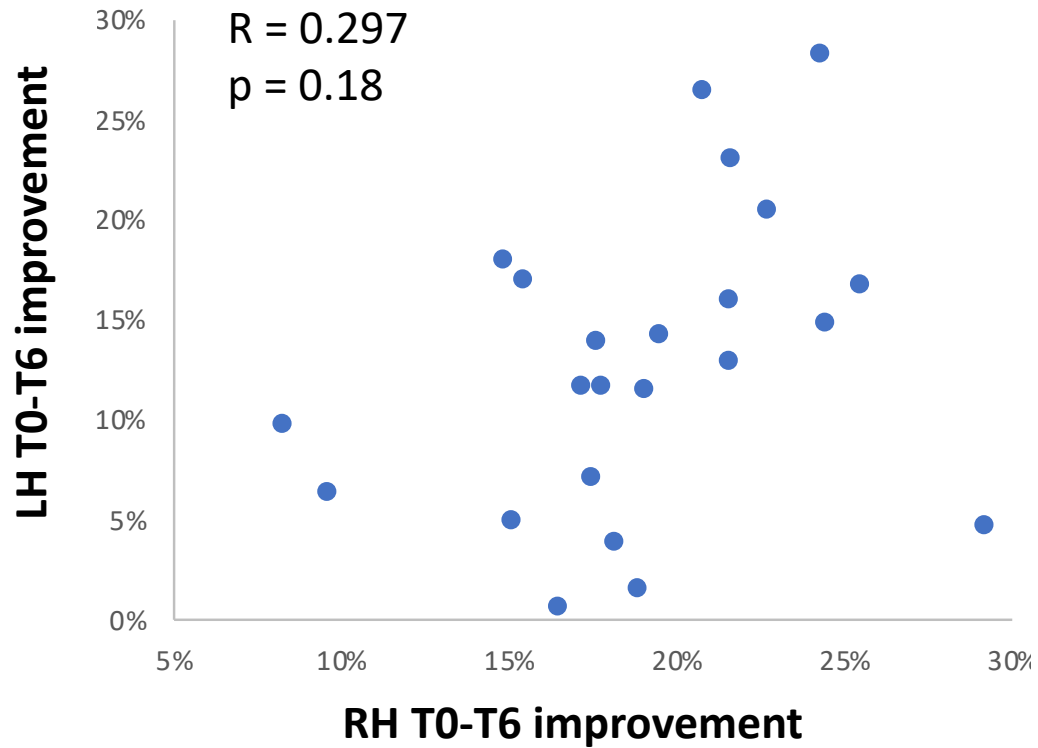
Results (1)

Behavioral endpoints

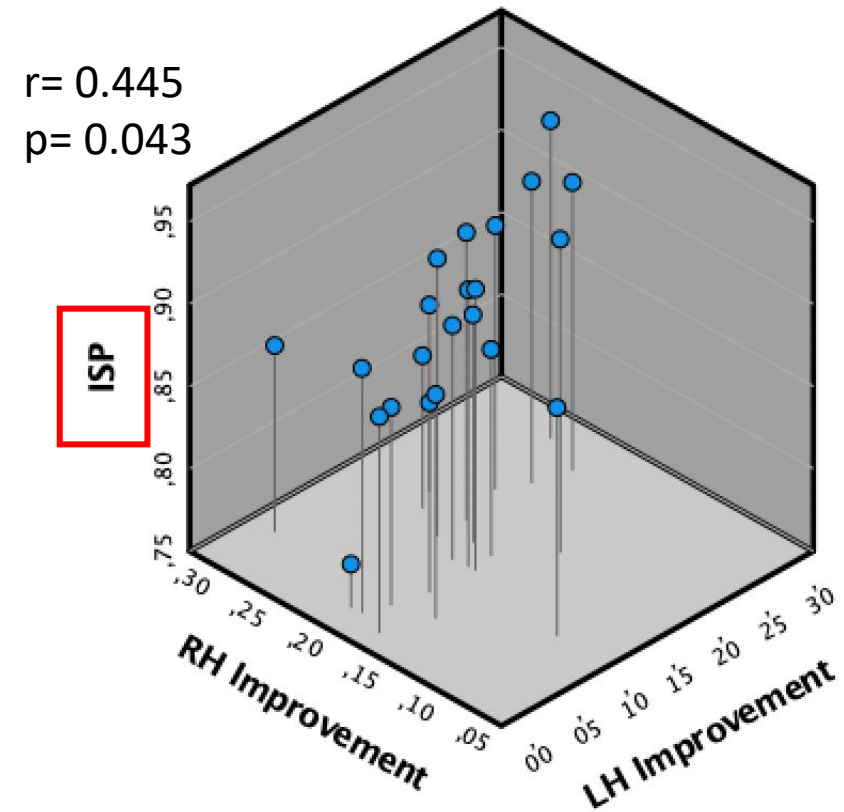


Results (2)

No correlation between
RH and LH improvement



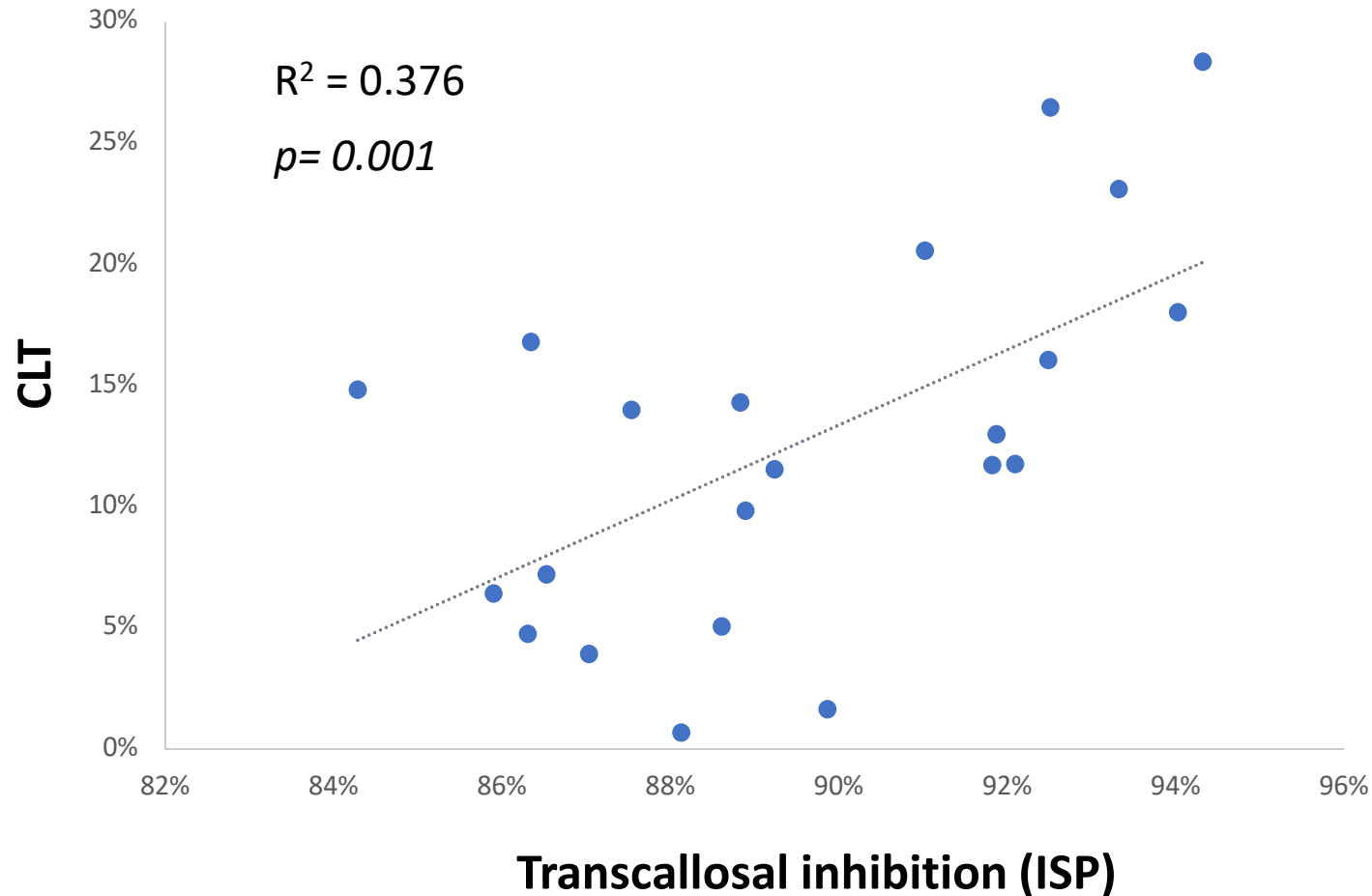
Significant partial correlation
(**ISP** as control variable)



Transcallosal inhibition makes significant the interplay between RH and LH learning

Results (3)

Transcallosal inhibition explains contralateral learning transfer



$$BF_{1/0} = 8.329$$



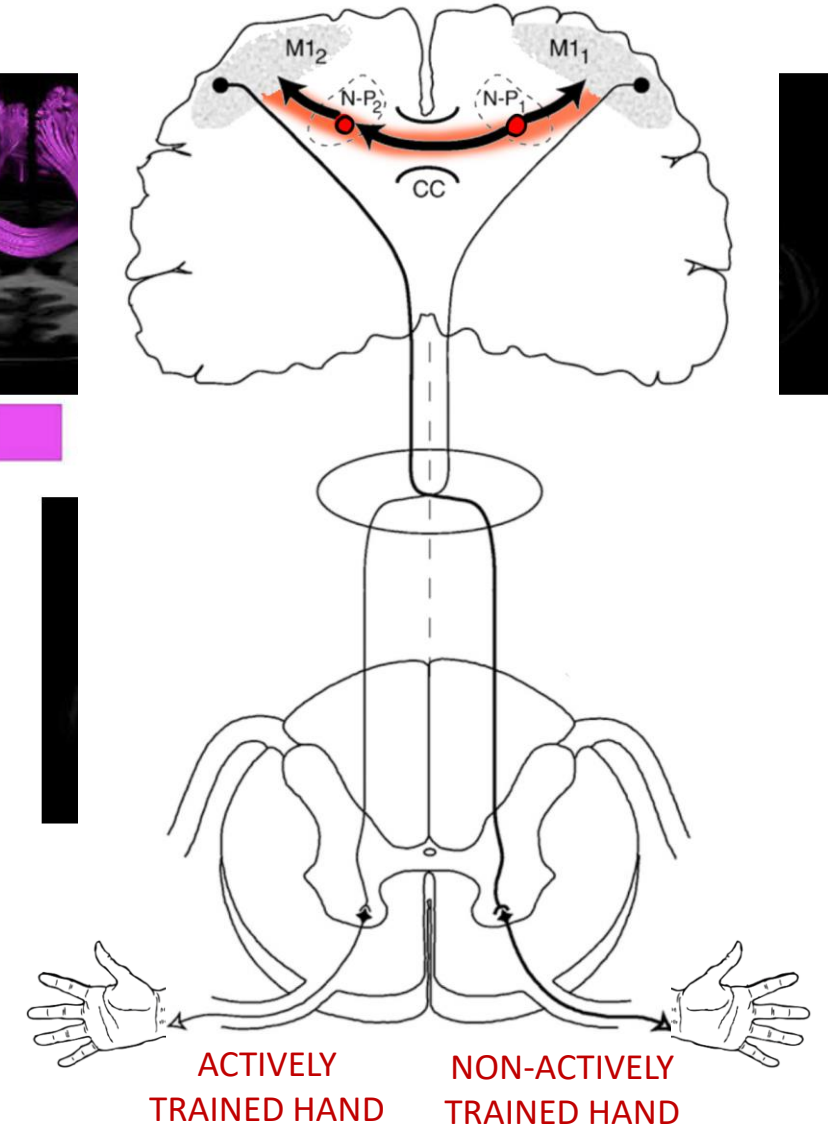
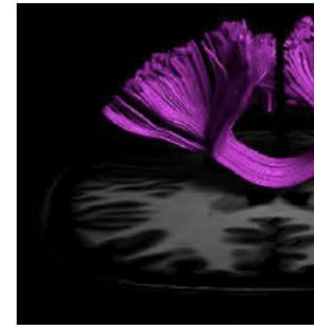
Substantial level of evidence in favor of the alternative hypothesis
(Kass and Raftery, 1995)

Conclusion

- Trans-callosal connections between brain motor structures drives CLT

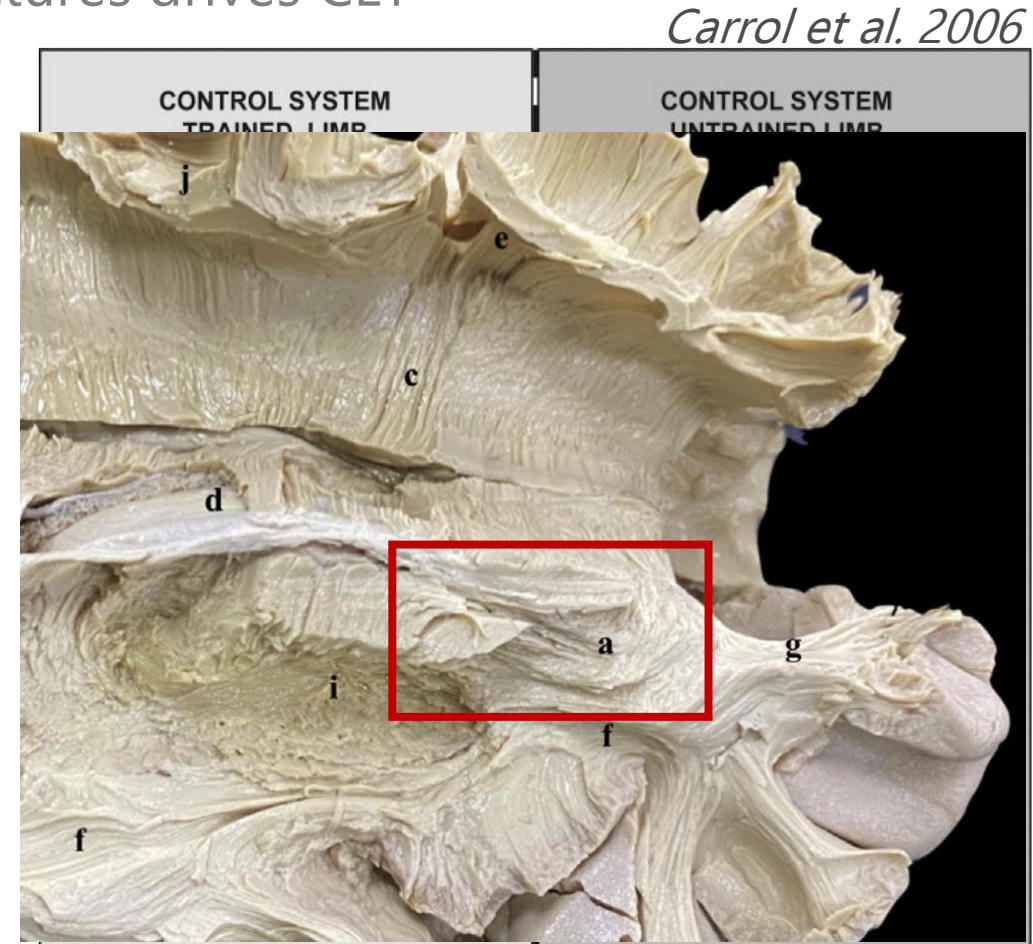
- Direct M1-to-M1 interplay?

- PM-PM and S1-S1 > M1-M1 connections
(Ruddy et al, 2017)
- M1-to-M1 proximal > distal motor connectivity
(Pandya and Vignolo, 1971; Jenny, 1979; Brodal, 2004)



Conclusion

- Trans-callosal connections between brain motor structures drives CLT
- Direct M1-to-M1 interplay?
 - PM-PM and S1-S1 > M1-M1 connections (Ruddy et al, 2017)
 - M1-to-M1 proximal>distal motor connectivity (Pandya and Vignolo, 1971; Jenny, 1979; Brodal, 2004)
- Role of *underground* callosal connections?



Shah et al. 2021

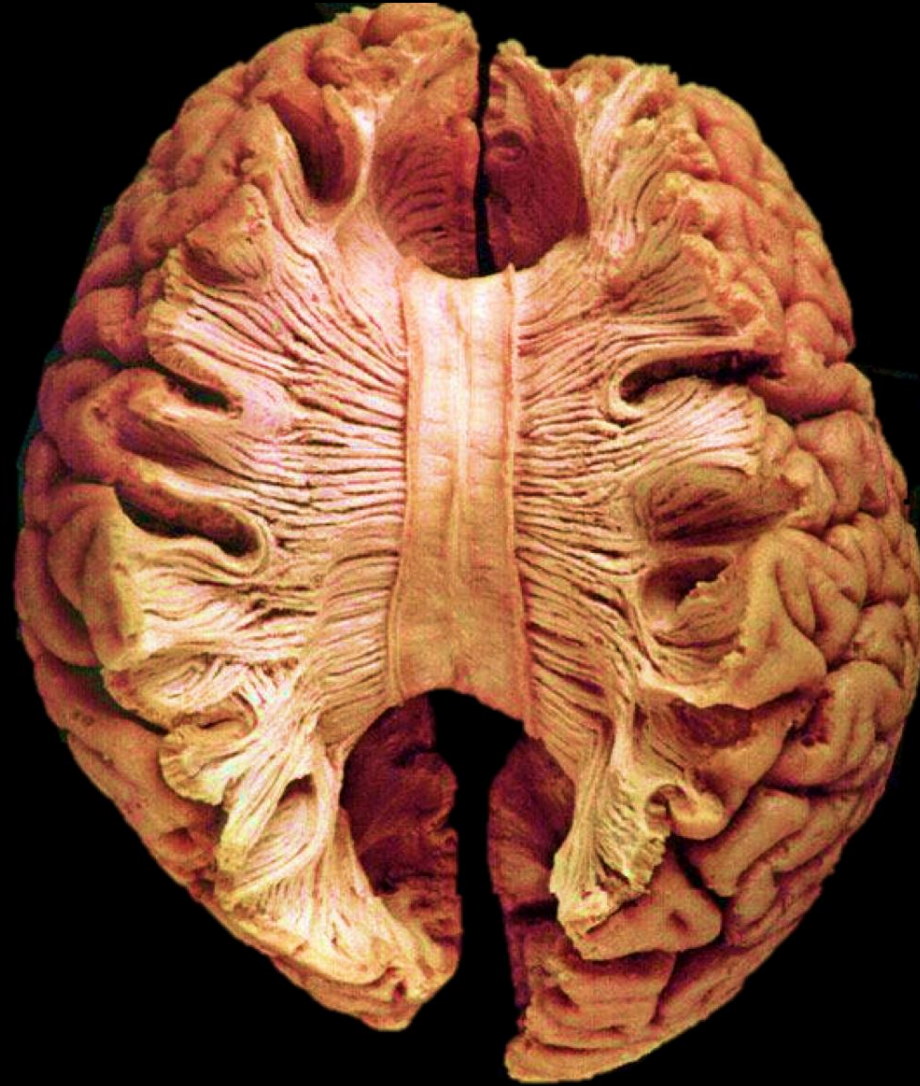
PFC: Prefrontal Cortex; BG: Basal Ganglia; CB: Cerebellum; PM: pre-motor cortex; SMA: supplementary motor area; B Stem: brainstem nuclei

Conclusion

- Trans-callosal connections between brain motor structures drives CLT
- Direct M1-to-M1 interplay?
 - PM-PM and S1-S1 > M1-M1 connections
(Ruddy et al, 2017)
 - M1-to-M1 proximal>distal motor connectivity
(Pandya and Vignolo, 1971; Jenny, 1979; Brodal, 2004)
- Role of *underground* callosal connections?
- **Potential for motor rehabilitation**



«[...] non sappia la tua sinistra quel che fa la destra» *Matteo 6,1-4*



Thank you for your attention!

Prof. Giacomo Rizzolatti
Pietro Avanzini
Maddalena Fabbri-Destro
Fausto Caruana
Giovanni Vecchiato
Maria Del Vecchio
Maria Chiara Bazzini
Paolo Presti
Antonella Mancuso



Recruiting in progress!

arturo.nuara@unipr.it